



# **Kangaroo Crown Crystal**

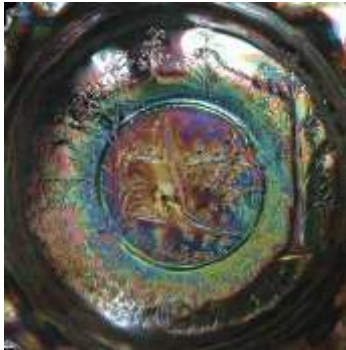


**Par Francine et Michel Jacob**

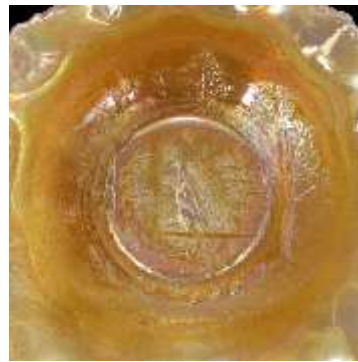
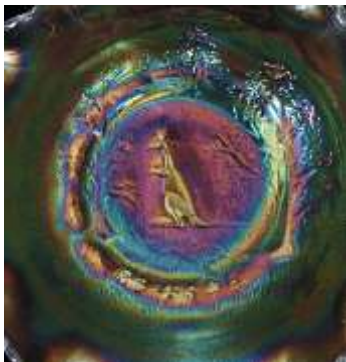
There are two different types of Kangaroo bowls. One shows the male (buck) Kangaroo, the other shows the female (doe) Kangaroo. Bowls with the male Kangaroo are worth twice as much as the bowls with the female Kangaroo. Although auctioneers rarely distinguish between the two.

The main difference is the size of the Kangaroo the "buck" is larger and the addition of a branch under the small Kangaroo "doe".

It comes in two sizes, the 9-inch bowl with 16 waves and the 5-inch (nappy) condiment bowl with 12 waves. There are sets of a large bowl with six small "berry set" bowls which are probably very rare.



We can clearly see here the difference between the two variants of the 9-inch Kangaroo bowl. For easier identification between the two, the one with the branch is the little “doe” Kangaroo.



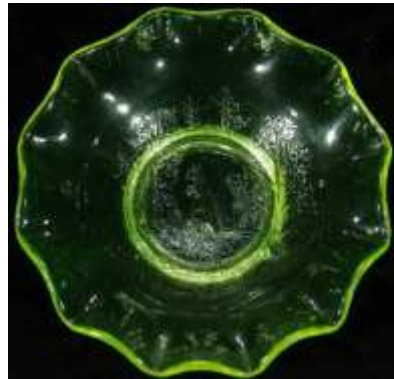
Here on the 5-inch (nappy) condiment bowls, the difference is not obvious. On the left, the “buck” and on the right, the “doe”. The Kangaroo "buck" is slightly larger. Not easy to differentiate them if you only have one in hand.



Here is a very rare "berry set" fruit set with the little Kangaroo "doe".



Another rare 9 inch bowl,  
with an aqua base.



Another rare 5 inch  
Vaseline bowl.